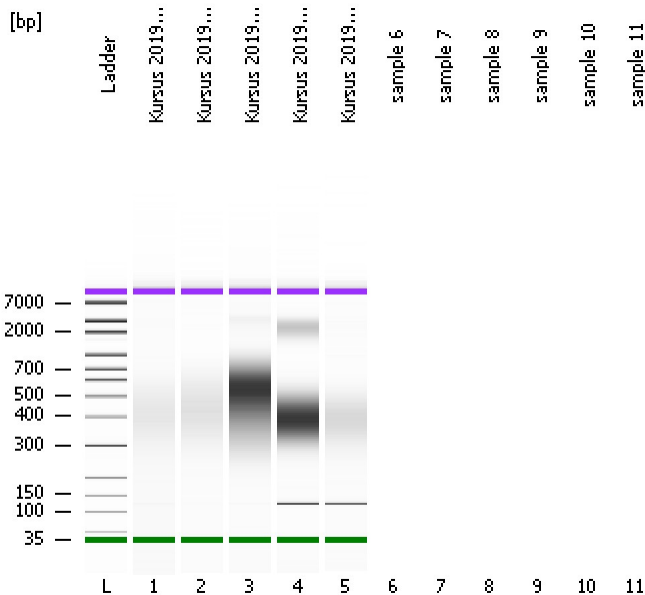


Assay Class: High Sensitivity DNA Assay
 Data Path: C:\...gh Sensitivity DNA Assay_DE34903050_2019-09-23_09-16-16.xad

Created: 9/23/2019 9:16:16 AM
 Modified: 9/23/2019 9:40:27 AM

Electrophoresis File Run Summary



Instrument Information:

Instrument Name: G2938CDE34903050 Firmware: C.01.069
 Serial#: DE34903050 Type: G2938C

Assay Information:

Assay Origin Path: C:\Program Files\Agilent\2100 bioanalyzer\2100 expert\assays\dsDNA\High Sensitivity DNA.xsy
 Assay Class: High Sensitivity DNA Assay
 Version: 1.03
 Assay Comments: Copyright © 2003-2010 Agilent Technologies

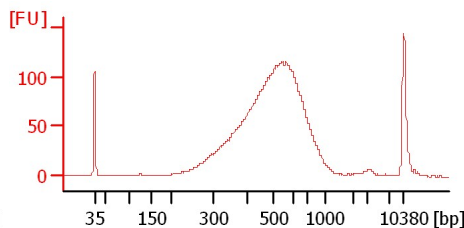
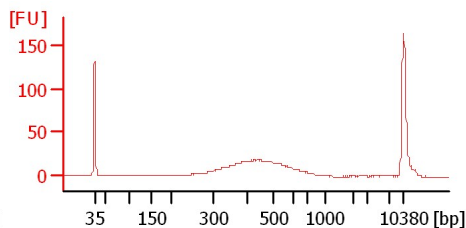
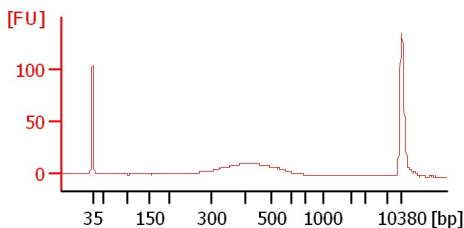
Chip Information:

Chip Lot #:
 Reagent Kit Lot #:
 Chip Comments:

Kursus 2019 library 41

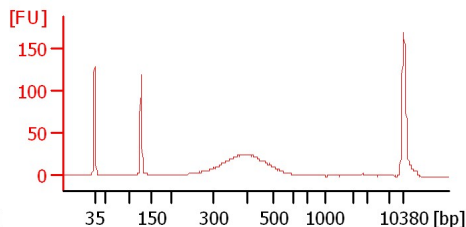
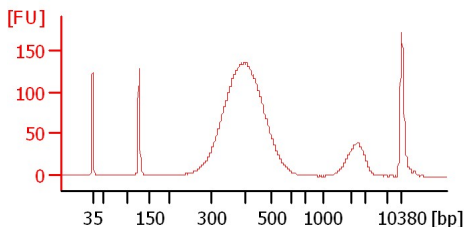
Kursus 2019 library 42

Kursus 2019 library 43



Kursus 2019 library 6

Kursus 2019 library 11



Assay Class: High Sensitivity DNA Assay
 Data Path: C:\...gh Sensitivity DNA Assay_DE34903050_2019-09-23_09-16-16.xad

Created: 9/23/2019 9:16:16 AM
 Modified: 9/23/2019 9:40:27 AM

Electrophoresis File Run Summary (Chip Summary)

Sample Name	Sample Comment	Rest. Digest	Status	Observation	Result Label	Result Color
Kursus 2019 library 41		<input type="checkbox"/>		✓		
Kursus 2019 library 42		<input type="checkbox"/>		✓		
Kursus 2019 library 43		<input type="checkbox"/>		✓		
Kursus 2019 library 6		<input type="checkbox"/>		✓		
Kursus 2019 library 11		<input type="checkbox"/>		✓		
sample 6		<input type="checkbox"/>				
sample 7		<input type="checkbox"/>				
sample 8		<input type="checkbox"/>				
sample 9		<input type="checkbox"/>				
sample 10		<input type="checkbox"/>				
sample 11		<input type="checkbox"/>				
Ladder		<input type="checkbox"/>		✓		

Chip Lot #

Reagent Kit Lot #

Chip Comments :

Assay Class: High Sensitivity DNA Assay
Data Path: C:\...gh Sensitivity DNA Assay_DE34903050_2019-09-23_09-16-16.xad

Created: 9/23/2019 9:16:16 AM
Modified: 9/23/2019 9:40:27 AM

Electrophoresis Assay Details

General Analysis Settings

Number of Available Sample and Ladder Wells (Max.) : 12
Minimum Visible Range [s] : 32
Maximum Visible Range [s] : 138
Start Analysis Time Range [s] : 33
End Analysis Time Range [s] : 137.5
Ladder Concentration [pg/ μ l] : 1950
Uses Standard Area for Ladder Fragments
Lower Marker Concentration [pg/ μ l] : 125
Upper Marker Concentration [pg/ μ l] : 75
Used Upper Marker for Quantitation
Standard Curve Fit is Point to Point
Show Data Aligned to Lower and Upper Marker

Integrator Settings

Integration Start Time [s] : 33.05
Integration End Time [s] : 137
Slope Threshold : 0.8
Height Threshold [FU] : 5
Area Threshold : 0.1
Width Threshold [s] : 0.6
Baseline Plateau [s] : 0.5

Filter Settings

Filter Width [s] : 0.5
Polynomial Order : 4

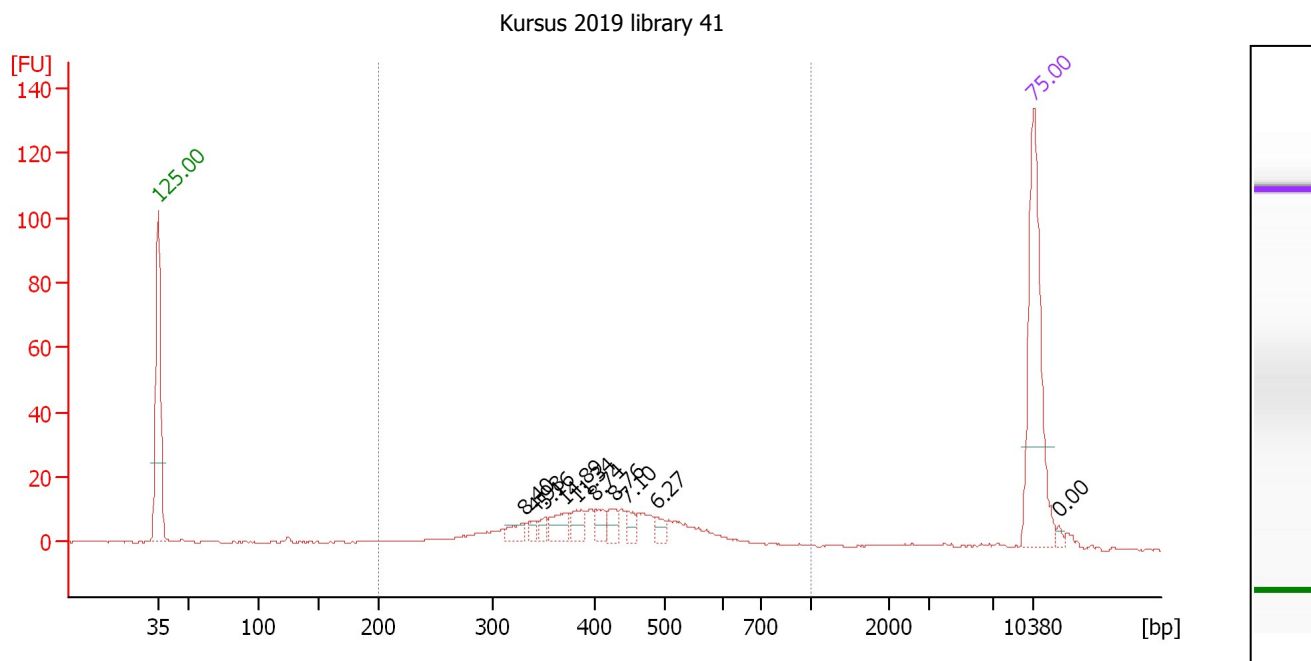
Ladder

Ladder Peak	Size	Area
1	35	160
2	50	210
3	100	208
4	150	221
5	200	242
6	300	270
7	400	305
8	500	306
9	600	336
10	700	321
11	1000	366
12	2000	413
13	3000	411
14	7000	400
15	10380	214

Assay Class: High Sensitivity DNA Assay
 Data Path: C:\...gh Sensitivity DNA Assay_DE34903050_2019-09-23_09-16-16.xad

Created: 9/23/2019 9:16:16 AM
 Modified: 9/23/2019 9:40:27 AM

Electropherogram Summary Continued ...



Overall Results for sample 1 : Kursus 2019 library 41

Number of peaks found: 10 Corr. Area 1: 224.5
 Noise: 0.2

Peak table for sample 1 : Kursus 2019 library 41

Peak	Size [bp]	Conc. [pg/μl]	Molarity [pmol/l]	Observations
1	35	125.00	5,411.3	Lower Marker
2	330	8.40	38.5	
3	341	4.98	22.1	
4	351	5.16	22.3	
5	372	14.89	60.7	
6	383	11.34	44.9	
7	403	8.74	32.9	
8	428	8.76	31.0	
9	447	7.10	24.1	
10	488	6.27	19.5	
11	10,380	75.00	10.9	Upper Marker
12	12,411	0.00	0.0	

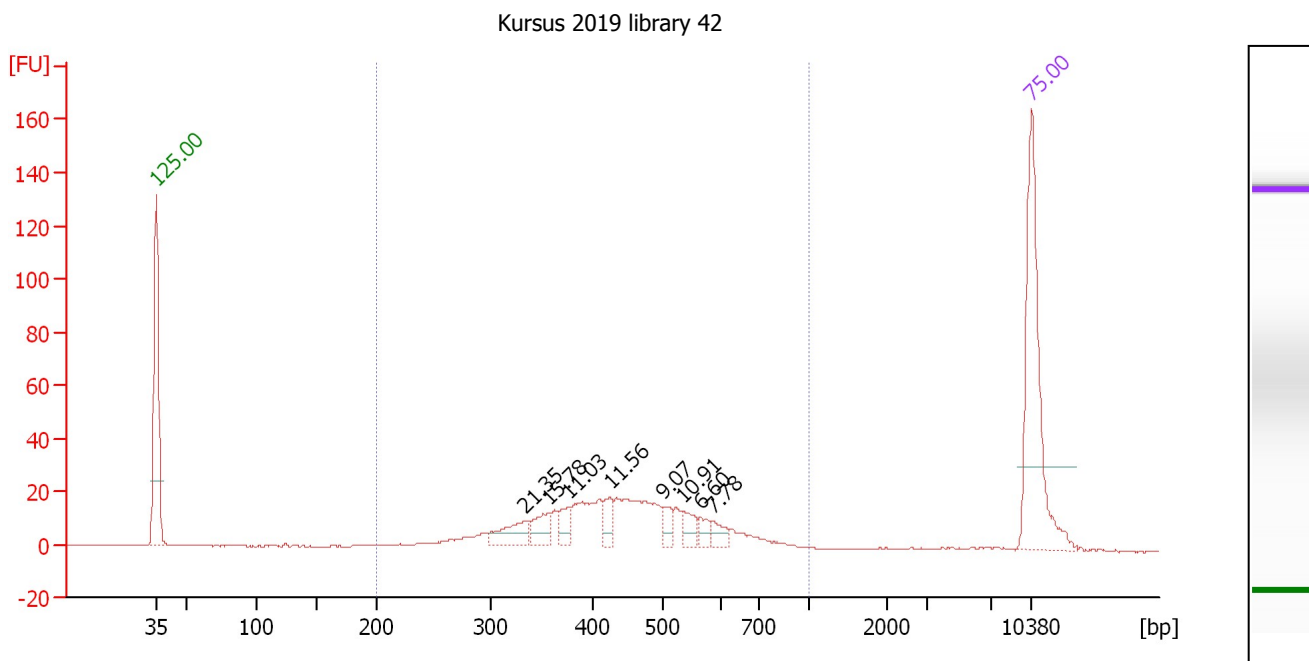
Region table for sample 1 : Kursus 2019 library 41

From [bp]	To [bp]	Corr. Area	% of Total	Average Size [bp]	Size distribution in CV [%]	Conc. [pg/μl]	Molarity [pmol/l]	Color
200	1,000	224.5	88	425	25.5	180.34	701.4	Blue

Assay Class: High Sensitivity DNA Assay
 Data Path: C:\...gh Sensitivity DNA Assay_DE34903050_2019-09-23_09-16-16.xad

Created: 9/23/2019 9:16:16 AM
 Modified: 9/23/2019 9:40:27 AM

Electropherogram Summary Continued ...



Overall Results for sample 2 : Kursus 2019 library 42

Number of peaks found: 8 Corr. Area 1: 376.6
 Noise: 0.2

Peak table for sample 2 : Kursus 2019 library 42

Peak	Size [bp]	Conc. [pg/µl]	Molarity [pmol/l]	Observations
1	35	125.00	5,411.3	Lower Marker
2	334	21.35	96.9	
3	357	15.78	67.0	
4	377	11.03	44.3	
5	426	11.56	41.1	
6	501	9.07	27.4	
7	534	10.91	30.9	
8	566	6.60	17.7	
9	588	7.78	20.1	
10	10,380	75.00	10.9	Upper Marker

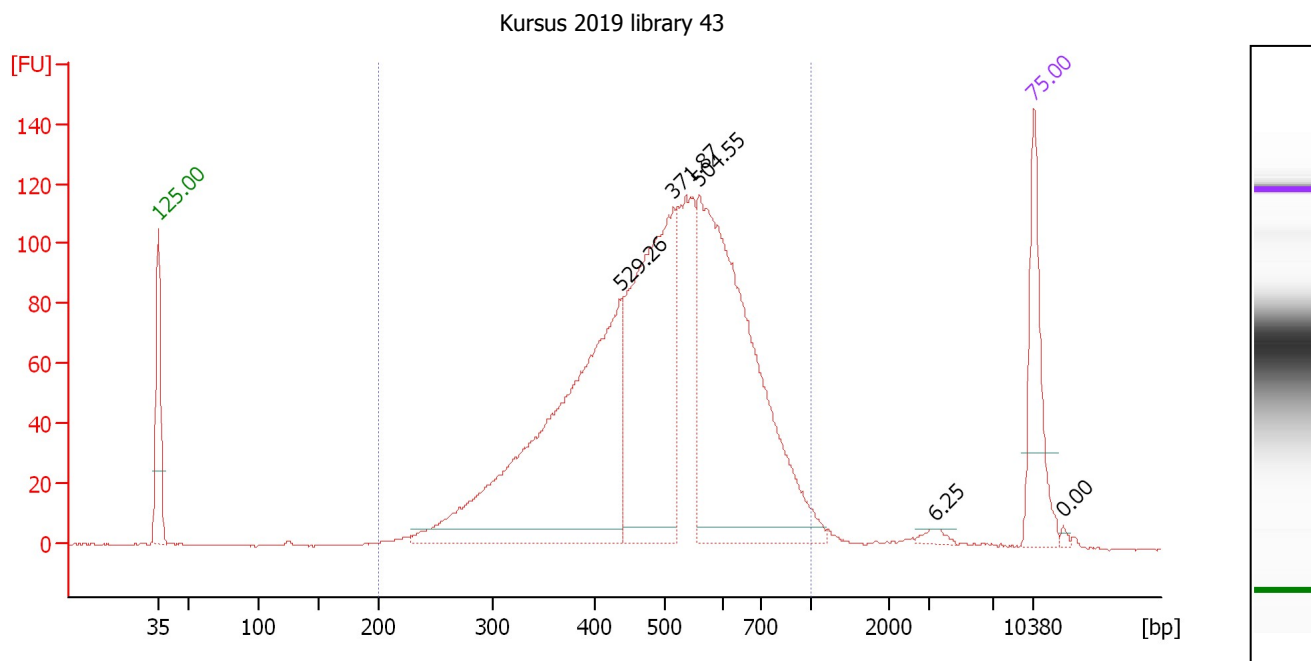
Region table for sample 2 : Kursus 2019 library 42

From [bp]	To [bp]	Corr. Area	% of Total	Average Size [bp]	Size distribution in CV [%]	Conc. [pg/µl]	Molarity [pmol/l]	Color
200	1,000	376.6	98	449	25.4	235.39	867.9	Blue

Assay Class: High Sensitivity DNA Assay
 Data Path: C:\...gh Sensitivity DNA Assay_DE34903050_2019-09-23_09-16-16.xad

Created: 9/23/2019 9:16:16 AM
 Modified: 9/23/2019 9:40:27 AM

Electropherogram Summary Continued ...



Overall Results for sample 3 : Kursus 2019 library 43

Number of peaks found: 5 Corr. Area 1: 2,189.1
 Noise: 0.2

Peak table for sample 3 : Kursus 2019 library 43

Peak	Size [bp]	Conc. [pg/µl]	Molarity [pmol/l]	Observations
1	35	125.00	5,411.3	Lower Marker
2	439	529.26	1,828.6	
3	515	371.87	1,093.7	
4	561	504.55	1,362.6	
5	3,407	6.25	2.8	
6	10,380	75.00	10.9	Upper Marker
7	12,814	0.00	0.0	

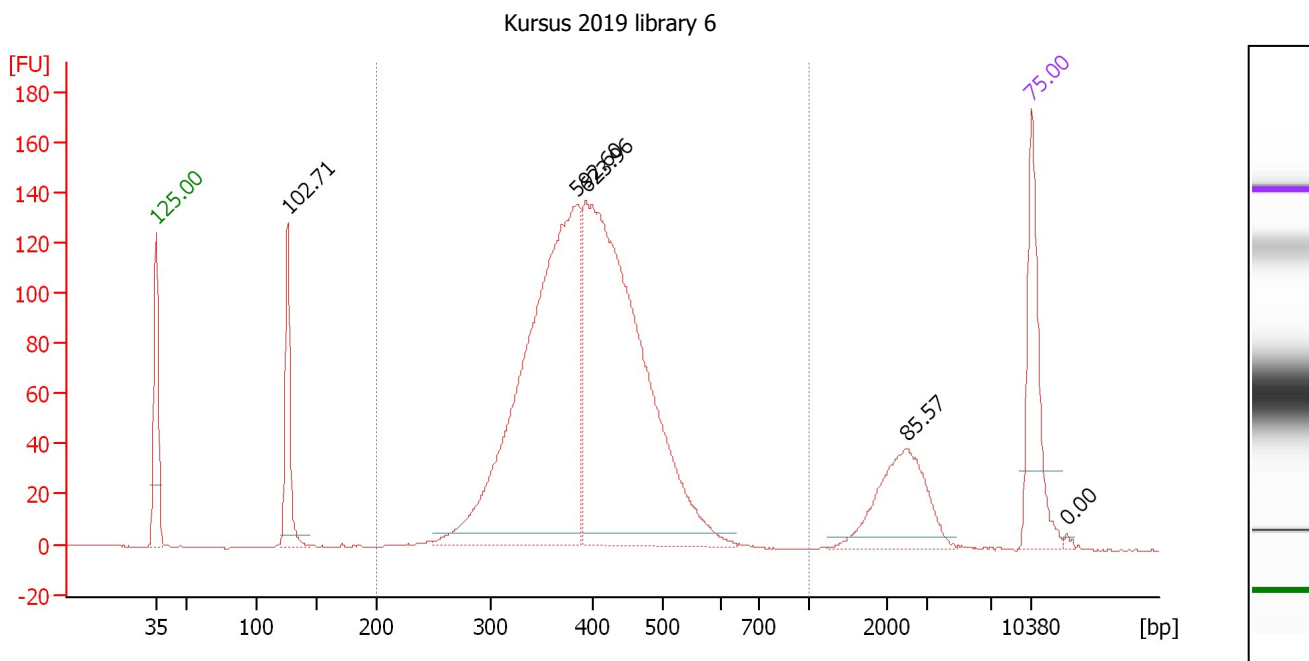
Region table for sample 3 : Kursus 2019 library 43

From [bp]	To [bp]	Corr. Area	% of Total	Average Size [bp]	Size distribution in CV [%]	Conc. [pg/µl]	Molarity [pmol/l]	Color
200	1,000	2,189.1	97	509	26.8	1,660.39	5,504.0	Blue

Assay Class: High Sensitivity DNA Assay
 Data Path: C:\...gh Sensitivity DNA Assay_DE34903050_2019-09-23_09-16-16.xad

Created: 9/23/2019 9:16:16 AM
 Modified: 9/23/2019 9:40:27 AM

Electropherogram Summary Continued ...



Overall Results for sample 4 : Kursus 2019 library 6

Number of peaks found: 5 Corr. Area 1: 1,906.2
 Noise: 0.2

Peak table for sample 4 : Kursus 2019 library 6

Peak	Size [bp]	Conc. [pg/μl]	Molarity [pmol/l]	Observations
1	35	125.00	5,411.3	Lower Marker
2	126	102.71	1,238.0	
3	385	592.60	2,332.5	
4	394	623.96	2,396.8	
5	2,472	85.57	52.5	
6	10,380	75.00	10.9	Upper Marker
7	13,302	0.00	0.0	

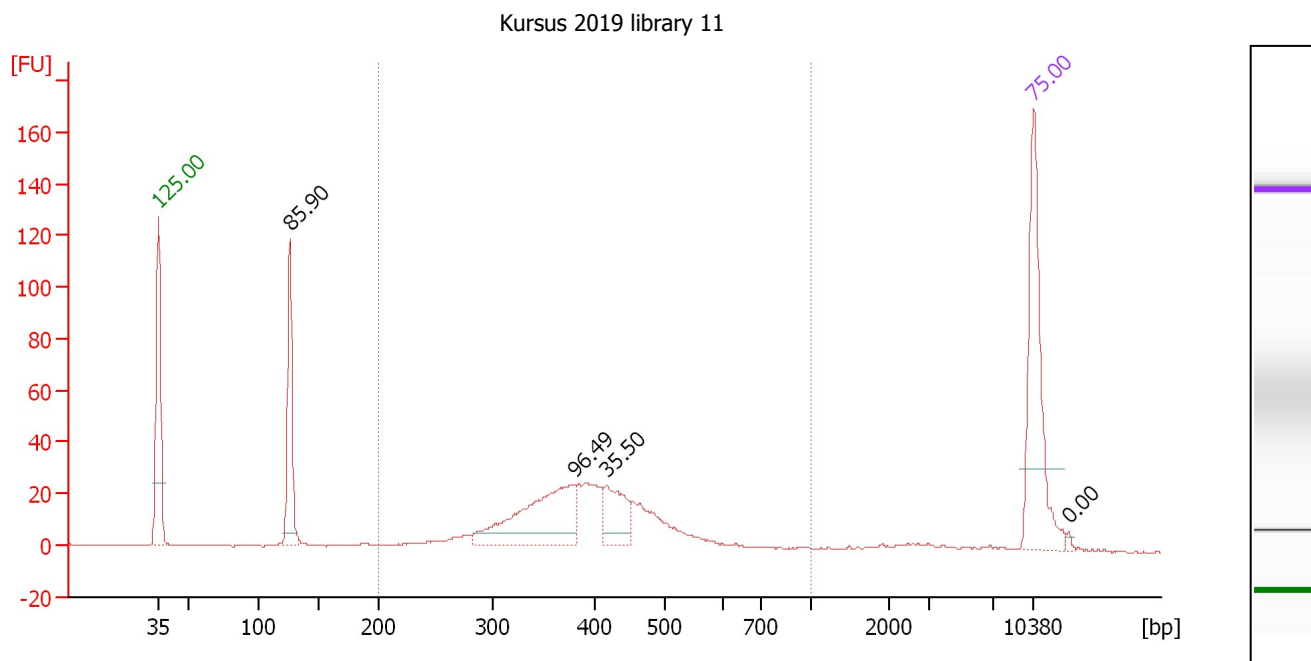
Region table for sample 4 : Kursus 2019 library 6

From [bp]	To [bp]	Corr. Area	% of Total	Average Size [bp]	Size distribution in CV [%]	Conc. [pg/μl]	Molarity [pmol/l]	Color
200	1,000	1,906.2	86	401	15.9	1,259.40	4,918.8	Blue

Assay Class: High Sensitivity DNA Assay
 Data Path: C:\...gh Sensitivity DNA Assay_DE34903050_2019-09-23_09-16-16.xad

Created: 9/23/2019 9:16:16 AM
 Modified: 9/23/2019 9:40:27 AM

Electropherogram Summary Continued ...



Overall Results for sample 5 : Kursus 2019 library 11

Number of peaks found: 4 Corr. Area 1: 381.9
 Noise: 0.2

Peak table for sample 5 : Kursus 2019 library 11

Peak	Size [bp]	Conc. [pg/μl]	Molarity [pmol/l]	Observations
1	35	125.00	5,411.3	Lower Marker
2	126	85.90	1,035.2	
3	380	96.49	384.6	
4	418	35.50	128.7	
5	10,380	75.00	10.9	Upper Marker
6	13,249	0.00	0.0	

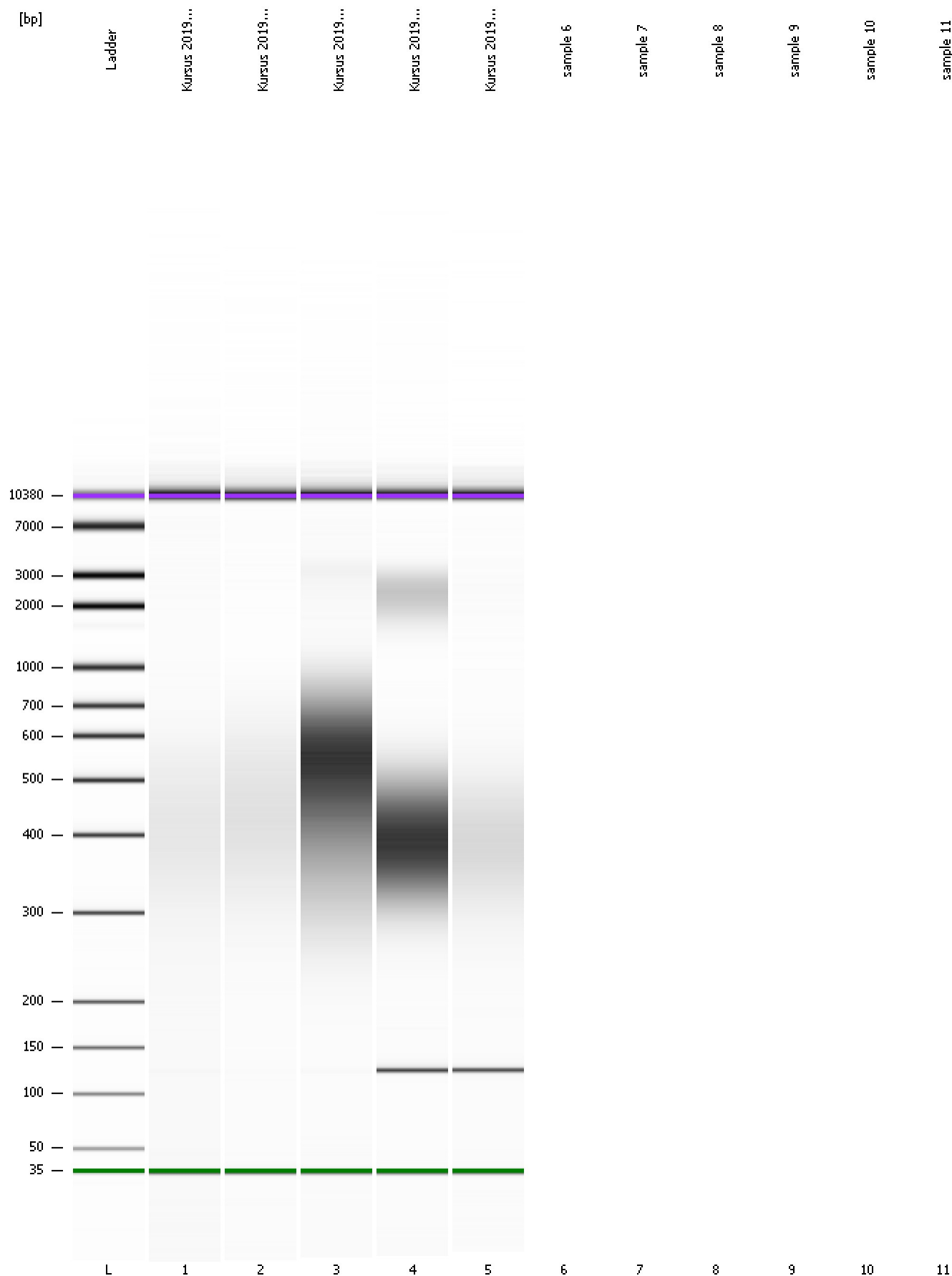
Region table for sample 5 : Kursus 2019 library 11

From [bp]	To [bp]	Corr. Area	% of Total	Average Size [bp]	Size distribution in CV [%]	Conc. [pg/μl]	Molarity [pmol/l]	Color
200	1,000	381.9	77	398	19.2	250.12	1,000.4	Blue

Assay Class: High Sensitivity DNA Assay
Data Path: C:\...gh Sensitivity DNA Assay_DE34903050_2019-09-23_09-16-16.xad

Created: 9/23/2019 9:16:16 AM
Modified: 9/23/2019 9:40:27 AM

Gel Image



Assay Class: High Sensitivity DNA Assay
Data Path: C:\...gh Sensitivity DNA Assay_DE34903050_2019-09-23_09-16-16.xad

Created: 9/23/2019 9:16:16 AM
Modified: 9/23/2019 9:40:27 AM

Invalid Samples

Sample 6 has not been run, no results available.

Assay Class: High Sensitivity DNA Assay Created: 9/23/2019 9:16:16 AM
 Data Path: C:\...gh Sensitivity DNA Assay_DE34903050_2019-09-23_09-16-16.xad Modified: 9/23/2019 9:40:27 AM

Run Logbook

Description	Number	Source	Category	Sub Category	Time	Time Zone	User	Host
Run ended on port 2 (Number of wells acquired: 6)		Instrument	Run		9/23/2019 9:40:24 AM	(GMT +02:00) Romance Standard Time	Lab	W-LAB02
Run started on port 2 (File: C:\Program Files\Agilent\2100 bioanalyzer\2100 expert\Data\2019-09-23\2100 expert_High Sensitivity DNA Assay_DE34903050_2019-09-23_09-16-16.xad)		Instrument	Run		9/23/2019 9:16:21 AM	(GMT +02:00) Romance Standard Time	Lab	W-LAB02
Product Number : G2938C		Instrument	Run		9/23/2019 9:16:21 AM	(GMT +02:00) Romance Standard Time	Lab	W-LAB02
Name : G2938CDE34903050		Instrument	Run		9/23/2019 9:16:21 AM	(GMT +02:00) Romance Standard Time	Lab	W-LAB02
Vendor : Agilent Technologies		Instrument	Run		9/23/2019 9:16:21 AM	(GMT +02:00) Romance Standard Time	Lab	W-LAB02
Serial# : DE34903050		Instrument	Run		9/23/2019 9:16:21 AM	(GMT +02:00) Romance Standard Time	Lab	W-LAB02
Firmware : C.01.069		Instrument	Run		9/23/2019 9:16:21 AM	(GMT +02:00) Romance Standard Time	Lab	W-LAB02
Cartridge : Electrode		Instrument	Run		9/23/2019 9:16:21 AM	(GMT +02:00) Romance Standard Time	Lab	W-LAB02