

Safety Moment - Risk assessment 2020

Activity / task	Control measures (Covid-19)
Is a physical assembly necessary or can the need be met with a virtual meeting?	No: it is a laboratory course that requires physical presence
Is the event's personal load adapted to the actual conditions or should the event be divided into several stages or locations?	<i>Yes: we will be working in groups of 2 persons at the bench, the rest of the group 4 persons will be sitting in a different location, There will be personal laboratory coats and bags for storages, gloves and mouthpieces will be available</i>
Can the assembly adhere to guidelines for distance requirements (especially on arrival, seating/ Labratoriawork, breaks, departure)?	Distance requirements met for seating - participants are guided on guidelines for distance requirements on arrival and start of meeting.
Can the assembly adhere to hygiene guidelines?	Participants are guided on guidelines for hygiene: wash hands / use rubbing alcohol - cough / sneeze into sleeve - avoid handshakes, hugs and cheek kisses.
Can the duration of the assembly be shortened?	Mødet er på under 3 timer - der er lagt pause ind – god luftskifte i mødelokalet via ventilation og vinduer.
Is there sufficient visible information material on infection prevention?	Information about infection prevention is communicated at this meeting + communicated the last 6 months at DTU Inside, by managers, media, etc ..
Are there special cleaning needs before, during and after?	Designated persons ensure cleaning of tables, chairs, door handles, etc., before, during and after the meeting.



Group



Form 6 groups

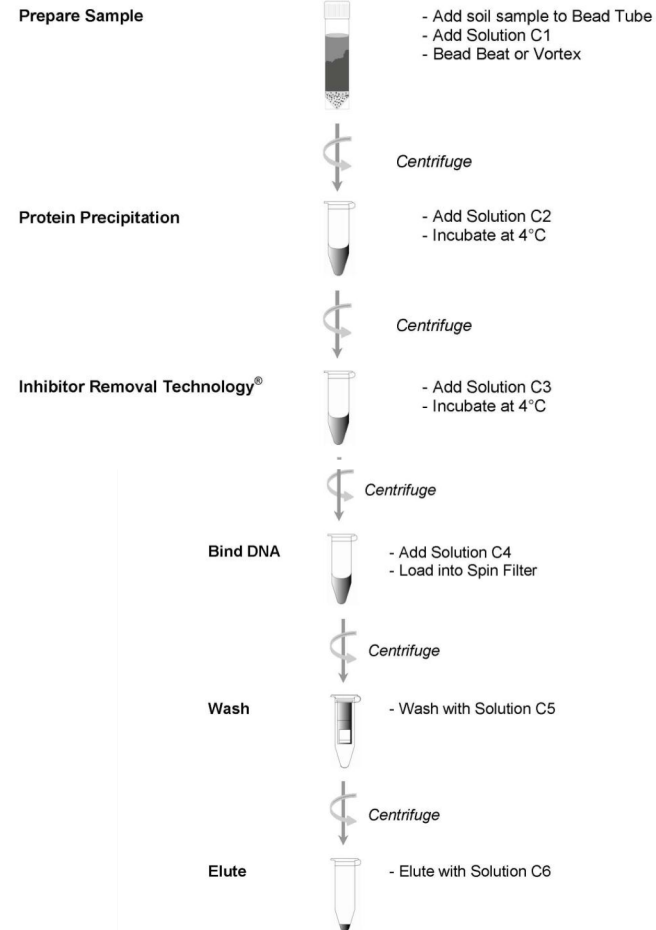
- 2 persons will be in the lab, you decide how you want to divide time between you
- I will like to see all of you in the lab

Wednesday 9 September

wild boar stool DNA Purification

Workflow for purification

PowerLyzer™ PowerSoil® DNA Isolation Kit



PowerLyzer™ PowerSoil® DNA Isolation Kit

Prepare Sample



- Add soil sample to Bead Tube
- Add Solution C1
- Bead Beat or Vortex



Homogenize for 5min
at 20m/s



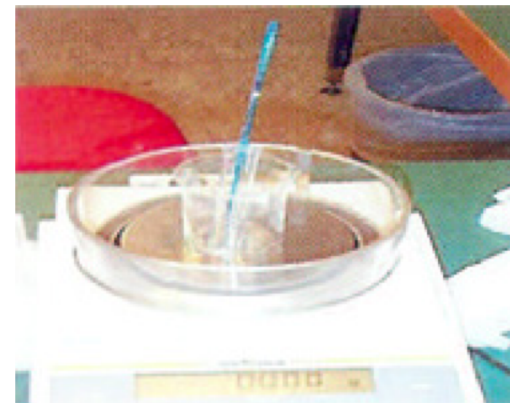
Transfer the sample to PowerLyzer™ Glass Bead Tube

PowerLyzer™ PowerSoil® DNA Isolation Kit

Prepare Sample



- Add soil sample to Bead Tube
- Add Solution C1
- Bead Beat or Vortex



Centrifuge for 1 min at 10,000 xg



Protein Precipitation and inhibitor removal of other organic materials

Protein Precipitation



- Add Solution C2
- Incubate at 4°C



Centrifuge

Inhibitor Removal Technology[®]



- Add Solution C3
- Incubate at 4°C



Centrifuge

Bind DNA



- Add Solution C4
- Load into Spin Filter



Centrifuge

Wash



- Wash with Solution C5



Centrifuge

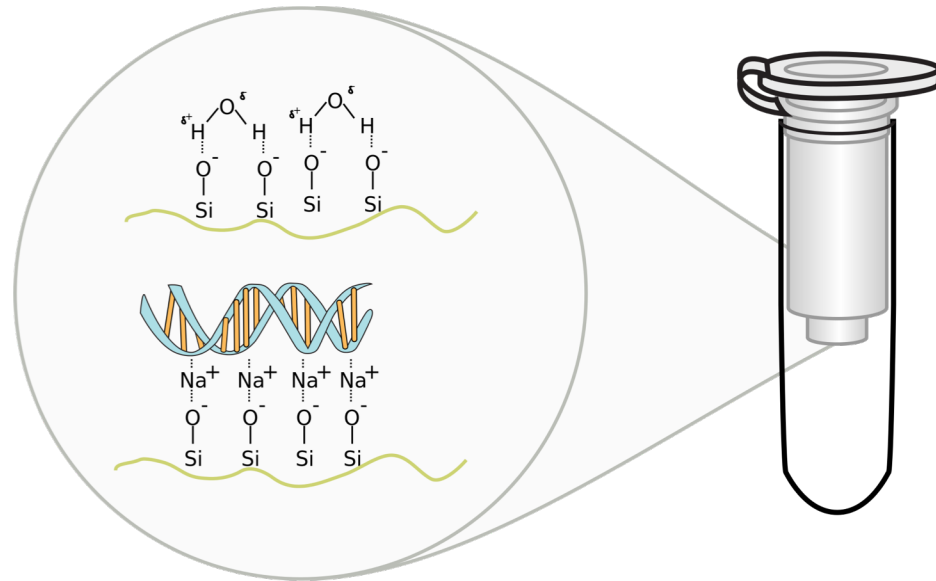
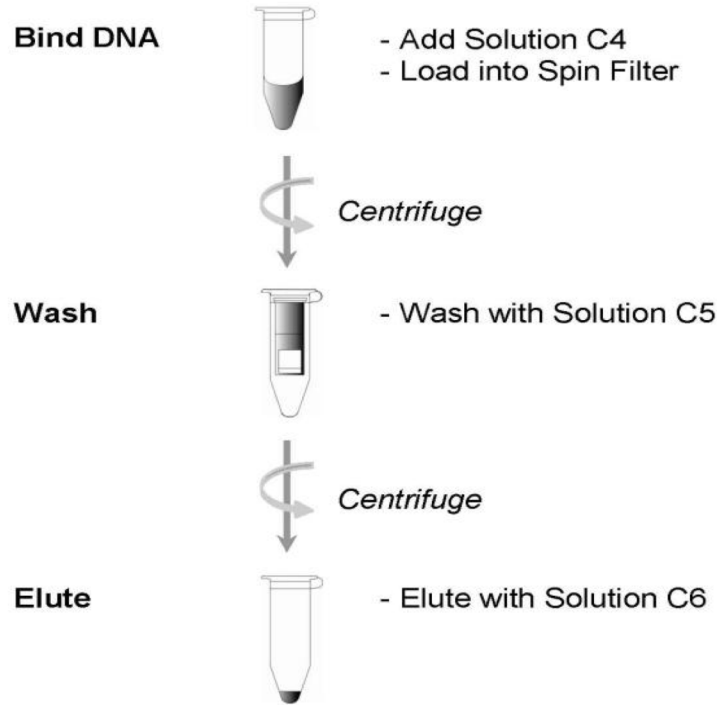
Elute



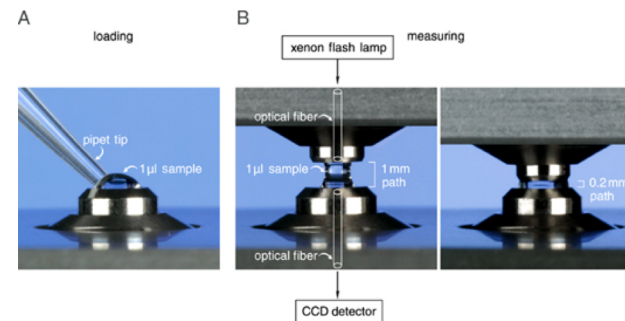
- Elute with Solution C6



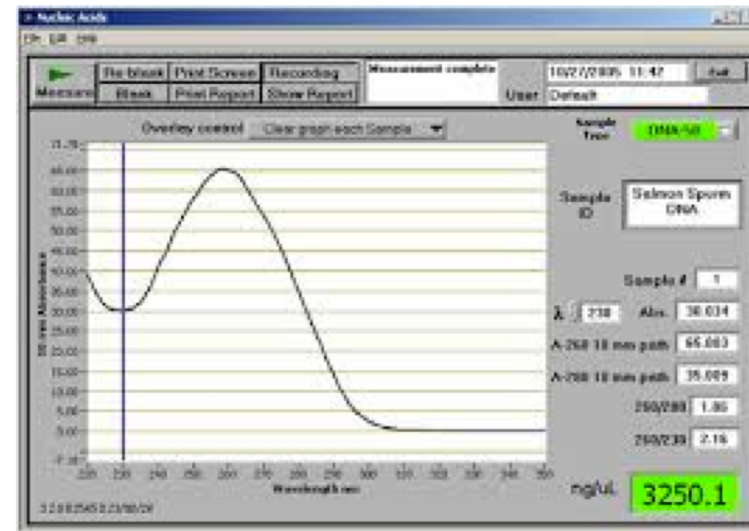
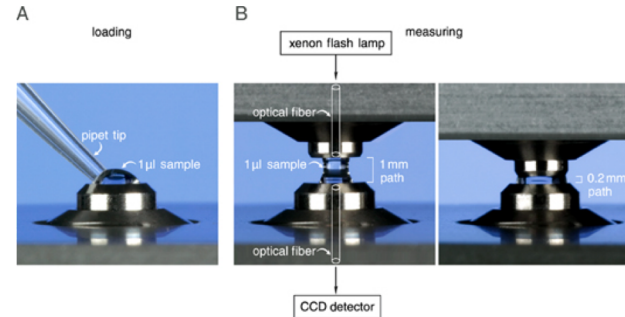
Binding of DNA, washing and Elute DNA



Measure the concentration of DNA



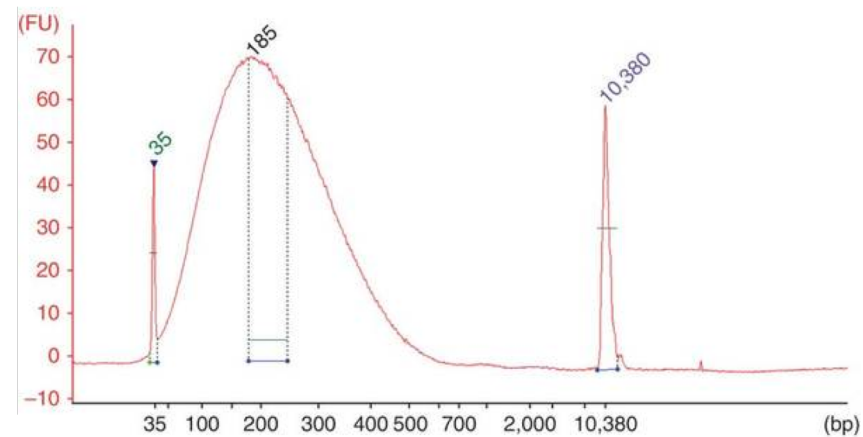
Measure the concentration of DNA



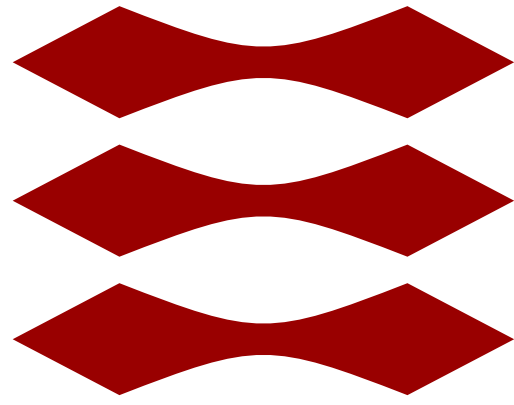
DNA shearing



Bioanalyser profile



DTU



- Prepare workflow for library-preparation
- Plan how you can visualise how the construct will look after sequencing

TIP!!!

NEXTflex™	Sequence
DNA Adapter	5'AATGATACGGCGACCACCGAGATCTACACTCTTTCCCTACACGACGCTCTTCCGATCT 5'GATCGGAAGAGCACACGTCTGAACTCCAGTCACCGATGTATCTCGTATGCCGTCTTCTGCTTG
Primer 1	5'AATGATACGGCGACCACCGAGATCTACAC
Primer 2	5'CAAGCAGAAGACGGCATAACGAGAT

Illumina:

<https://www.youtube.com/watch?v=fCd6B5HRaZ8>

<https://www.youtube.com/watch?v=womKfikWlxM>

